



Consumption based emissions and city responses to climate change

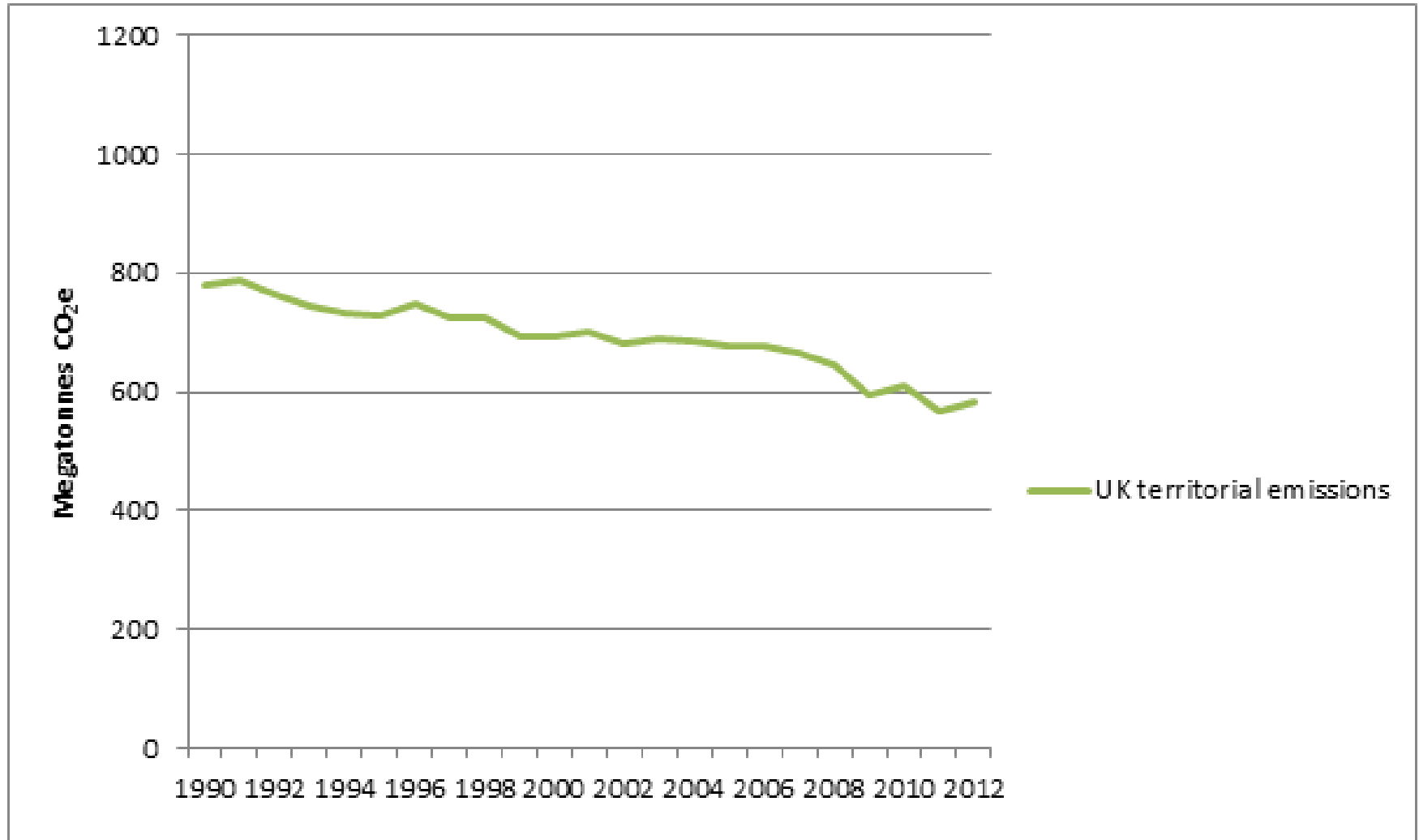
Dr Katy Roelich



UK Emissions - Territorial



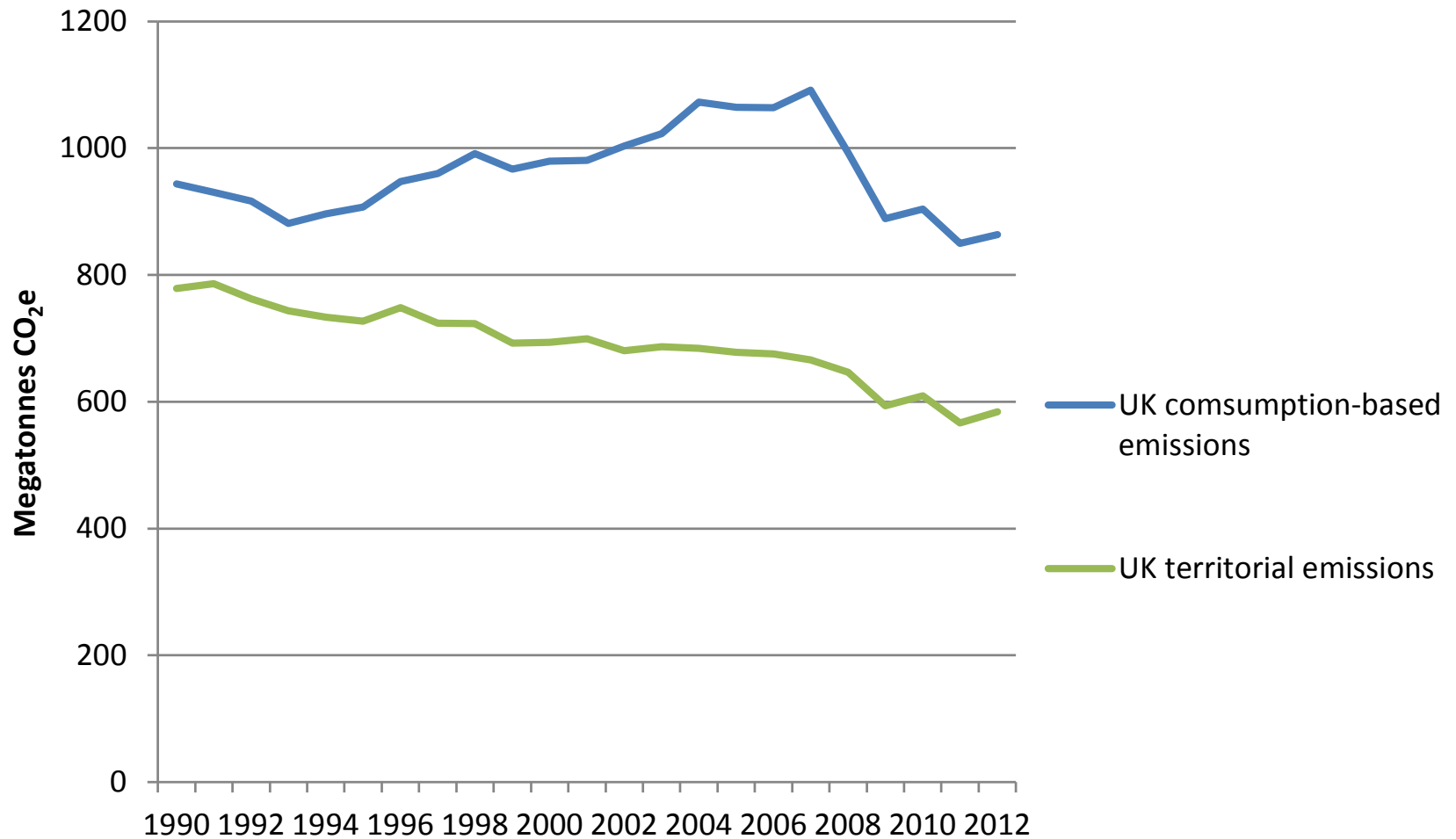
UNIVERSITY OF LEEDS



UK emissions – Territorial and Consumption



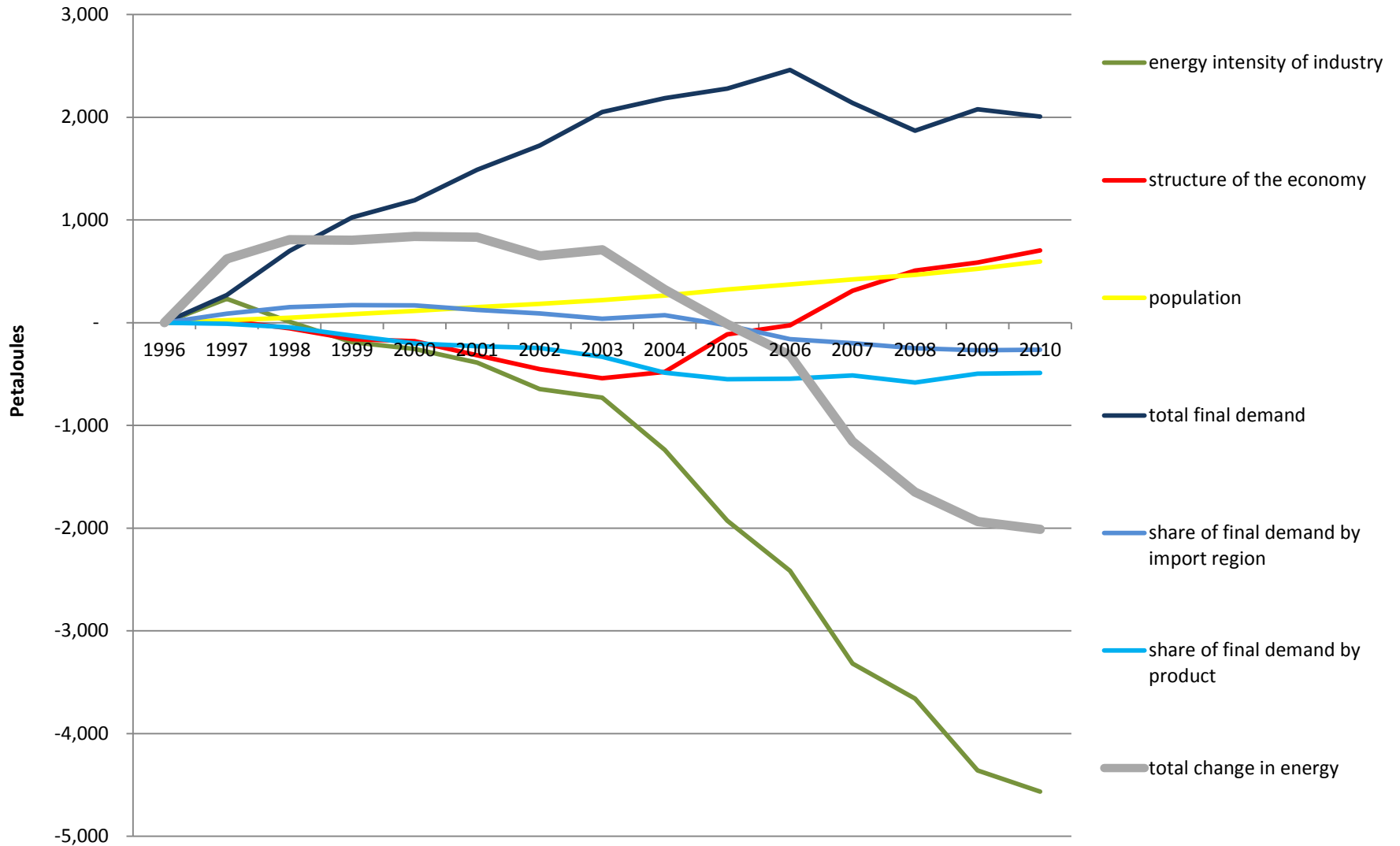
UNIVERSITY OF LEEDS



Drivers of change of the indirect energy used by the UK



UNIVERSITY OF LEEDS



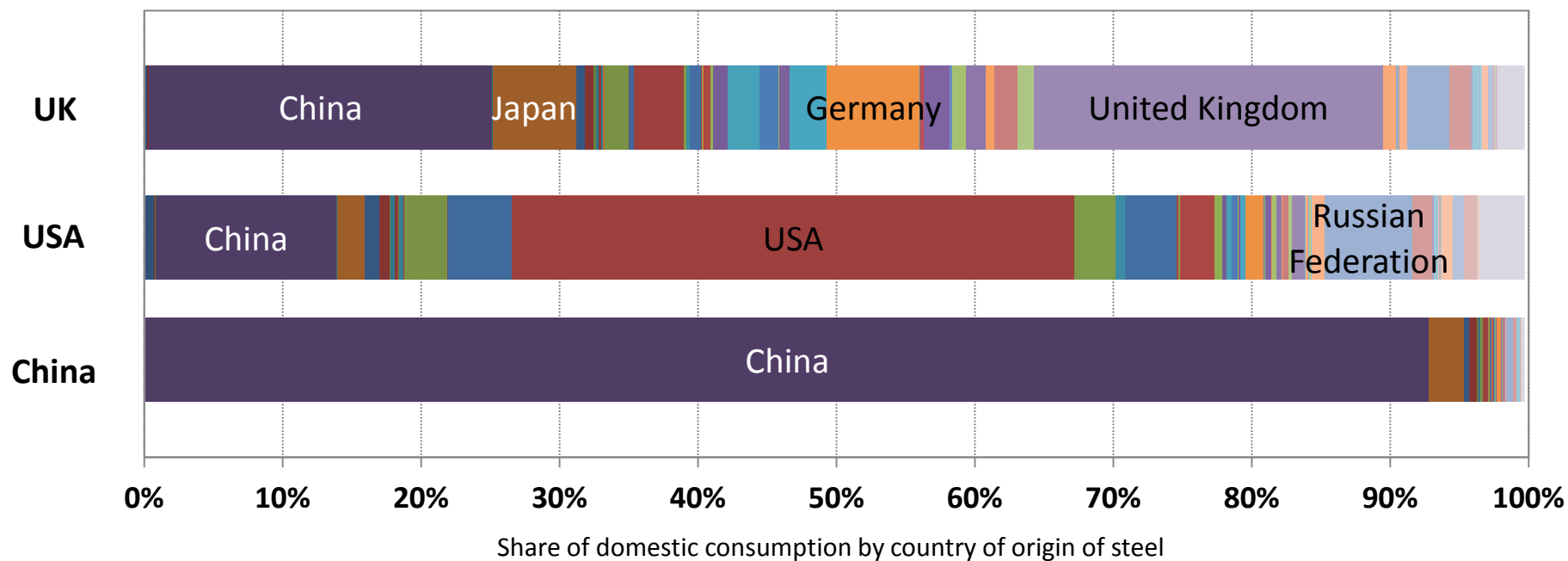
Source: University of Leeds



Scale of Traded Emissions - Sector

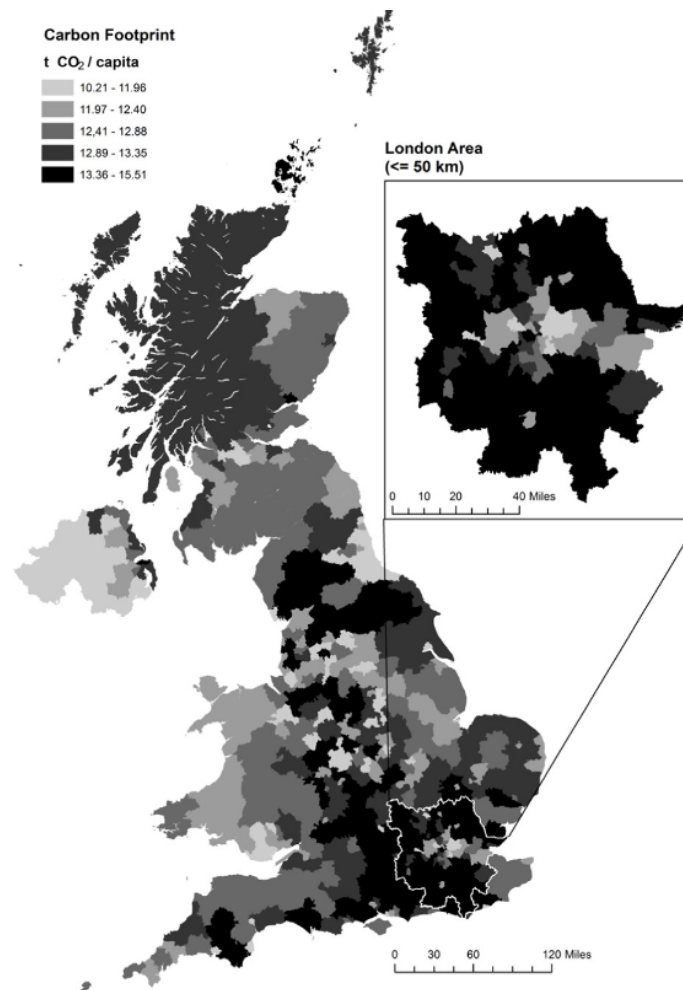


UNIVERSITY OF LEEDS



Source: Sakai et al (2012)

Consumption emissions in a city



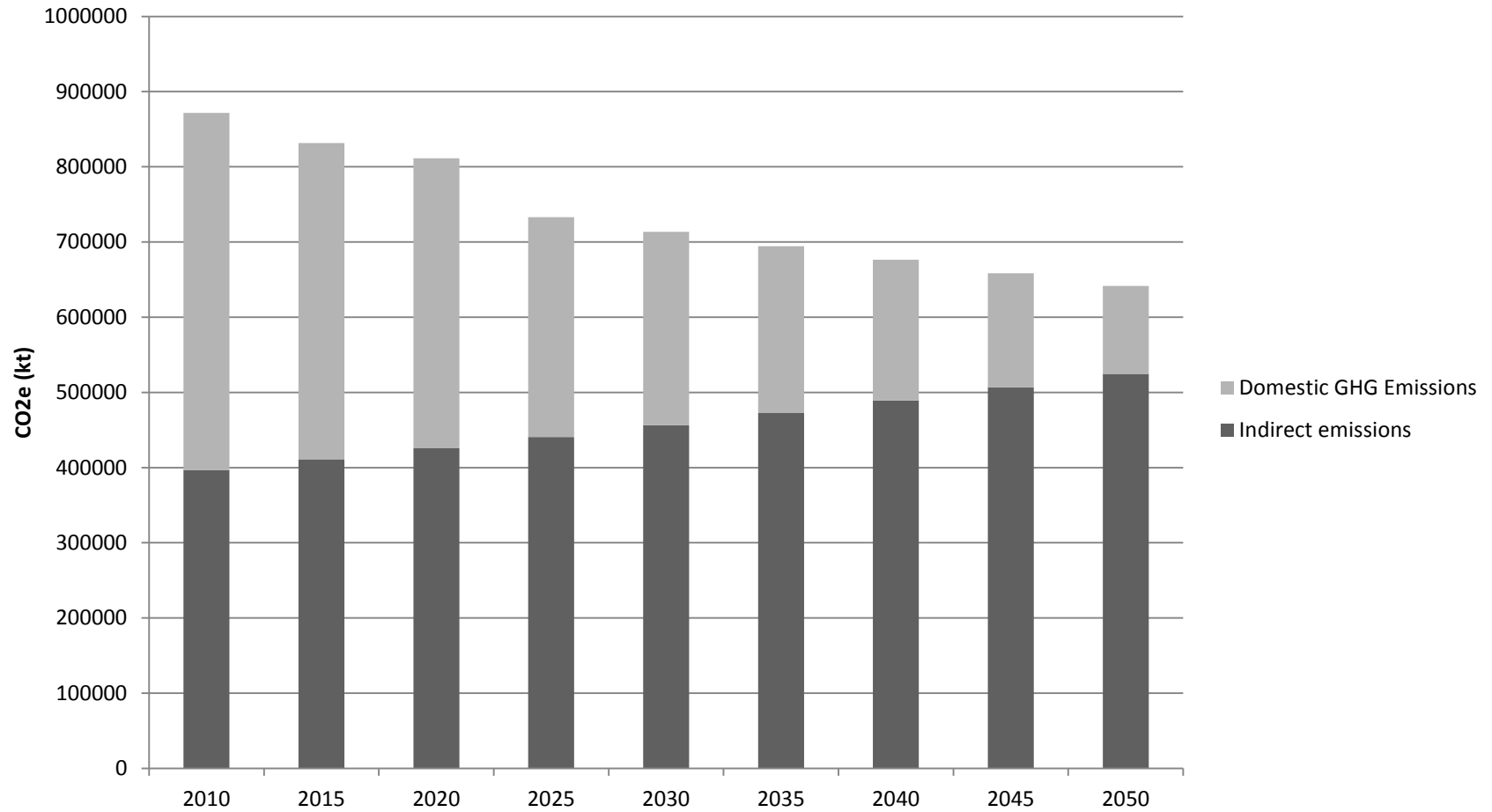
Minx et al 2013

Figure 2. Per capita CF of 434 municipalities in the UK. Inset shows London and municipalities that border within 50 km radius from centre. There is no clear pattern in terms of the geographic positioning of high and low CF municipalities. Only around London is a ring of municipalities with a high CF, while municipalities within Greater London tend to have a below average CF.



The need for additional policy

UNIVERSITY OF LEEDS

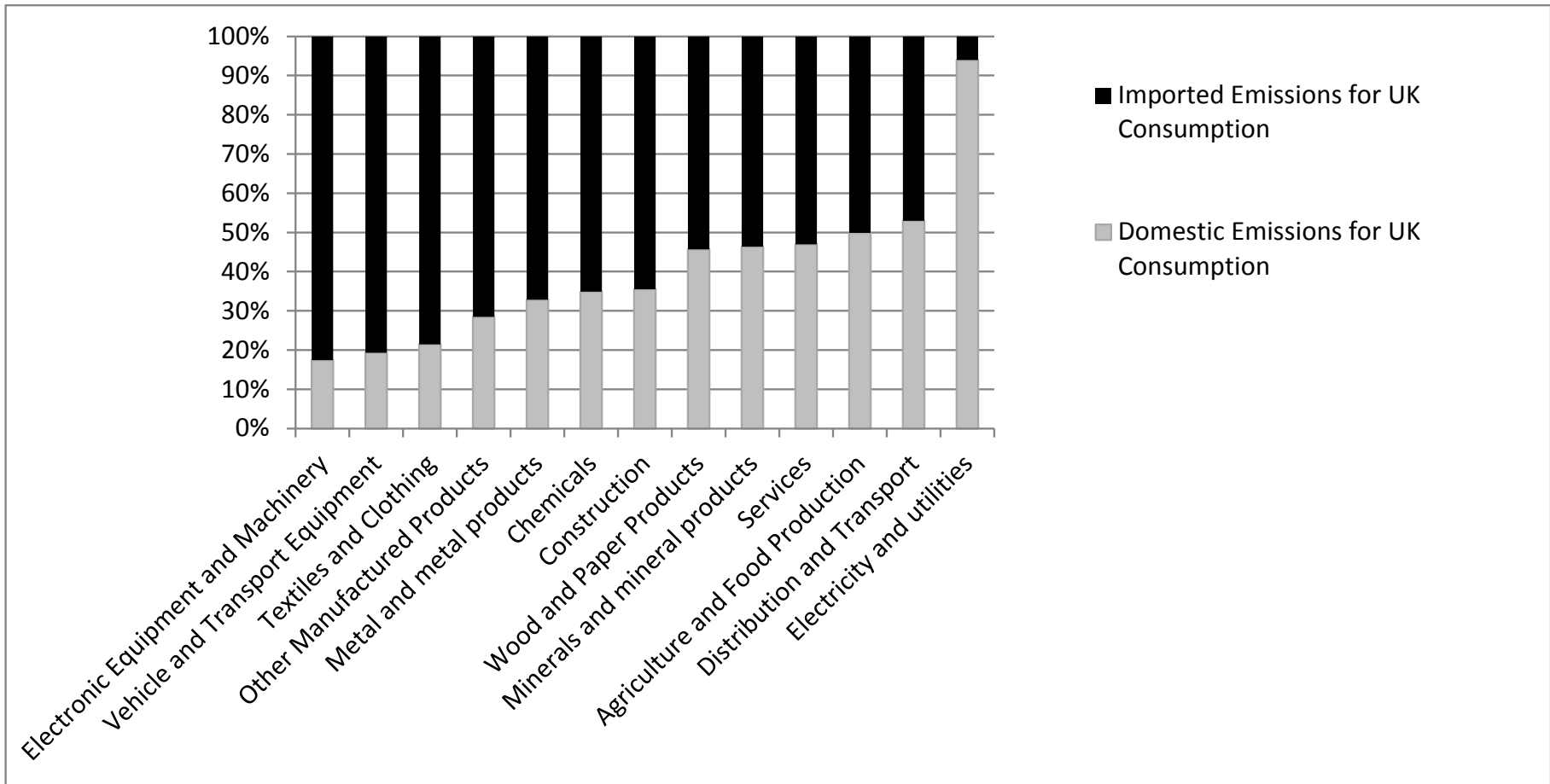




Where would you start with additional policy?



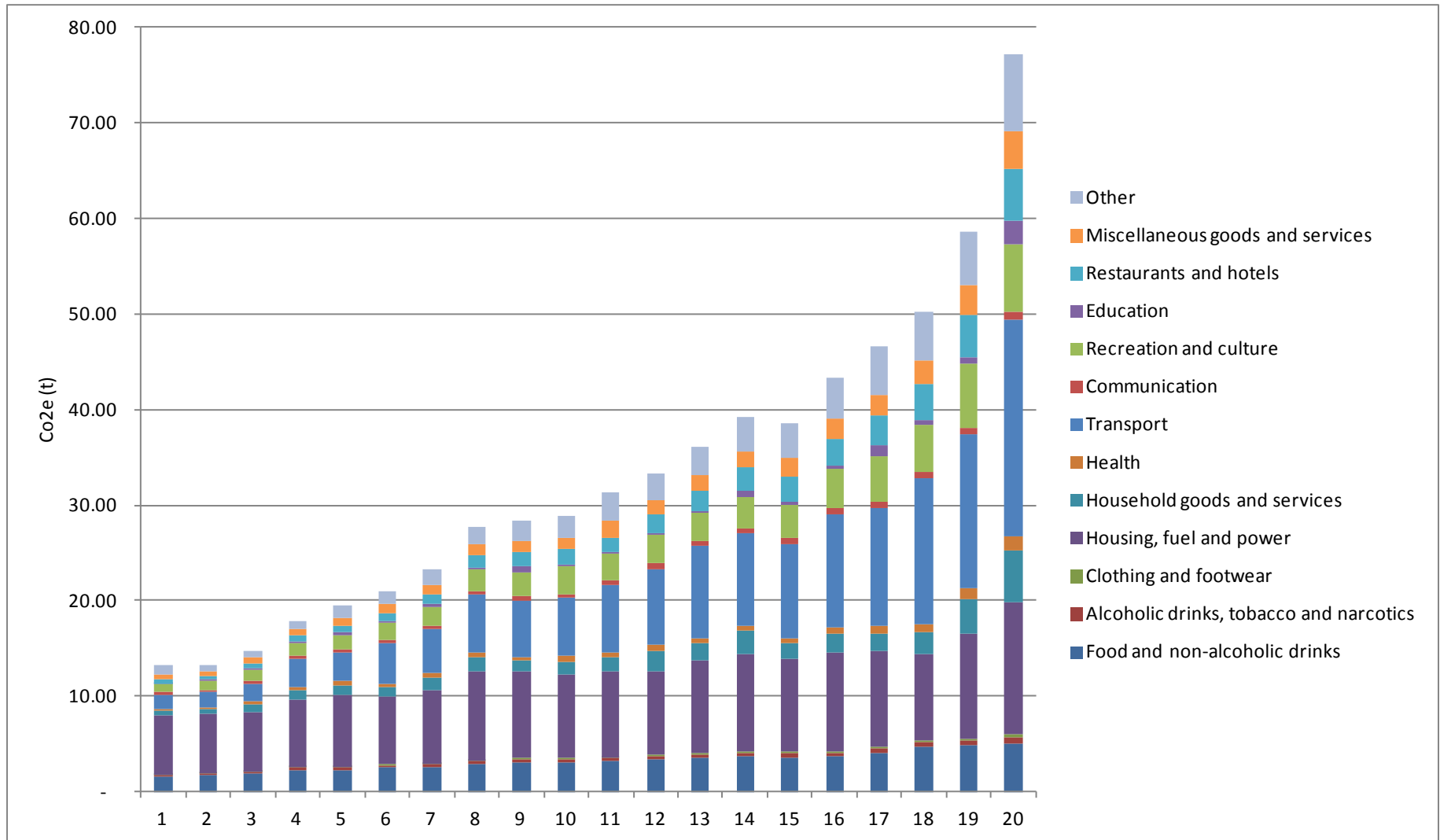
UNIVERSITY OF LEEDS



Emissions and social distribution



UNIVERSITY OF LEEDS





Policy Responses and carbon leakage



UNIVERSITY OF LEEDS



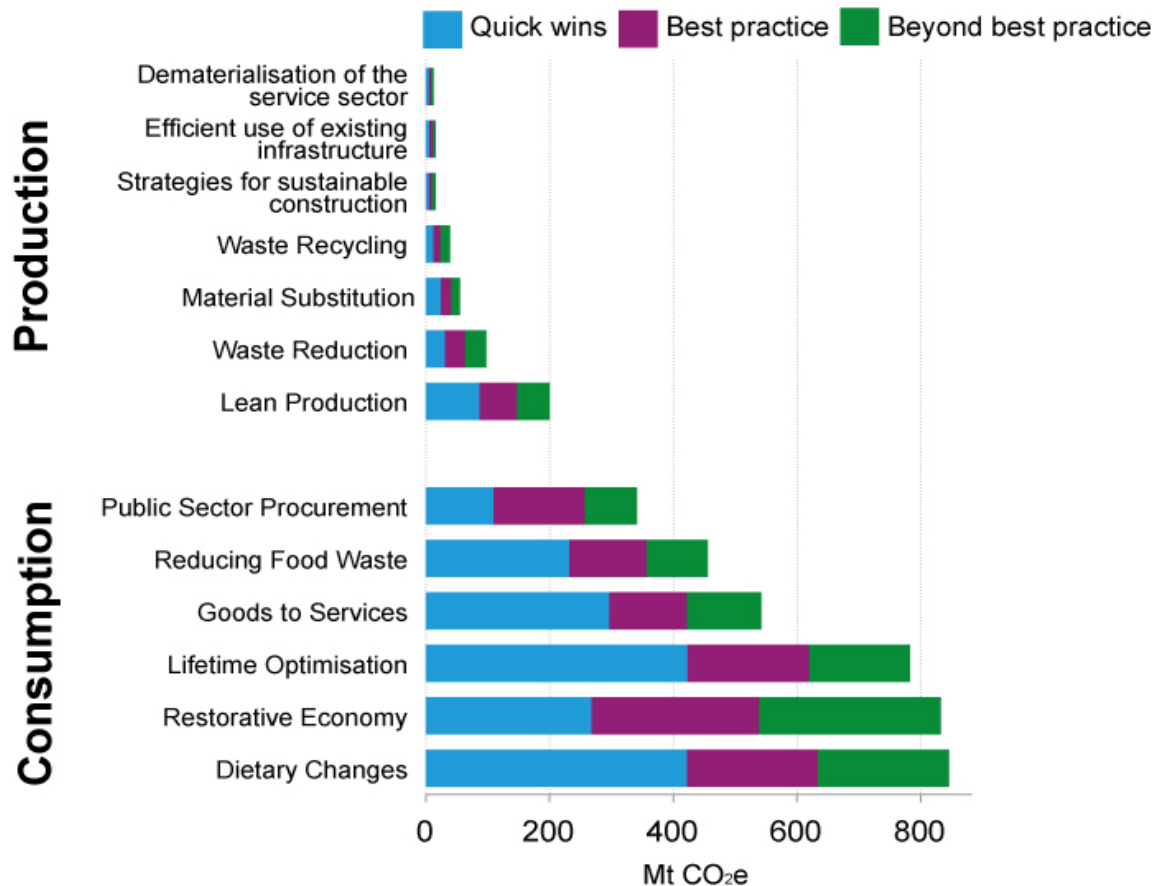
Source: The Guardian

Additional policy options



Mitigation Options

Consumption-based responses offer greater reductions in GHG emissions than production-based responses



Additional Policy Options



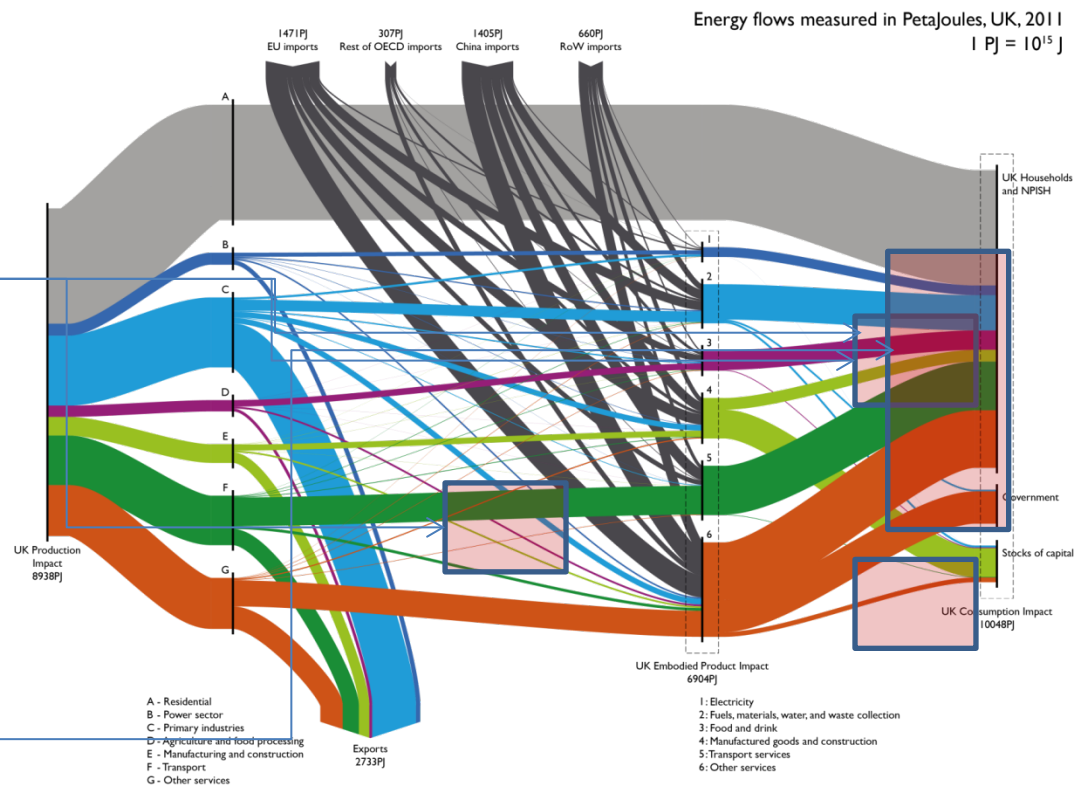
UNIVERSITY OF LEEDS

Sector response

- Government procurement
- Planning requirements for construction
- Support for alternative business models

Consumer solutions

- Enabling car clubs
- Food waste reduction
- Energy service companies
- Enabling collaborative consumption



References and other useful publications



UNIVERSITY OF LEEDS

- Barrett, J., C. Le Quéré, M. Lenzen, G. Peters, K. Roelich, and T. Wiedmann. 2011. UK Energy Research Centre Response to the Energy and Climate Change Committee Consultation on Consumption-based Emission Reporting. London, UK: UKERC.
<http://www.publications.parliament.uk/pa/cm201012/cmselect/cmenergy/writev/consumpt/con20.htm>.
- Barrett, J., Peters G., Wiedmann T., Scott K., Lenzen M., Roelich K., C. Le Quéré (2013) Consumption-based GHG Emission Accounting: a UK case study. *Climate Policy*, Vol 13., No.4., 451-470.
- Barrett J., Owen A., Sakai M. (2011) UK Consumption Emissions by Sector and Origin, Report to the UK Department for Environment, Food and Rural Affairs by University of Leeds.
- Barrett J. and Scott K. (2012) Link between Climate Change Mitigation and Resource Efficiency: A UK Case Study, *Global Environment Change*, Volume 22, Issue 1, February 2012, Pages 299-307.
- Barrett J., Vanner R., Sakai M., Owen A. (2012a) GHG Emissions Embodied in Trade – Is Border Adjustment an appropriate and effective response, Report to the Centre for Low Carbon Futures, York.
- Scott K., Barrett J. Baiocchi G., Minx J. (2009) Meeting the UK climate change challenge: The contribution of resource efficiency, published by Waste Resources Action programme (WRAP).
- Wiedmann T. and Barrett J. (2013) Policy relevant Applications of Environmentally Extended MRIO Databases – Experiences from the UK. *Economic Systems Research*, 25:1, 143-156.